

Policy and Insurance Regulations
need to
Build on solid ground

A photograph of a flooded field. The foreground is dominated by shallow, murky water interspersed with patches of green grass and weeds. In the middle ground, a larger, more continuous body of water reflects the overcast sky. The background shows a line of trees and a fence, suggesting a rural or agricultural setting. The overall atmosphere is somber due to the grey, overcast sky.

Year 2000

ZIPCAR: Is it like a fleet? Or Car rental? Commercial or personal plates? Can it park in loading zones? Is it an illegal “business” parked in residentially zoned areas?



Year 2007 Velib:

Are shared bikes public transportation? Stored in public ways? What if owned by a private company? Is my own bike as good as public transportation?





Year 2012

YEAR 2012

UBER/LYFT RIDE HAILING:

Are they taxis?

Are drivers employees? Require special inspections? Type of insurance?

Toggle between personal and commercial use?

YEAR 2017: Are they safe?

You Retweeted



Streetsblog USA @StreetsblogUSA · Aug 20

The thing on the left is banned for the safety. The thing on the right is not.

This should help explain why our traffic safety outcomes in the US are by far the worst in the developed world.



14 161 437

Show this thread

33% of motor-vehicle fatalities are people outside the vehicle (has risen steadily since a low of 20% in 1996).

In cities, pedestrian fatalities have increased by 46 percent since 2008; and cyclist fatalities increased by 13 percent since 2008..

You Retweeted



Angie Schmitt @schmangee · Aug 21

But e-scooters!



6 11 117

Year 202X?

When I rent out my own AV, is it a taxi?
Is it public transport if 4 people are in it?
How about if 1?



Shared Mobility Principles for Livable Cities

1 Plan cities and mobility together



2 Focus on moving people, not cars



3 Encourage efficient use of space and assets



4 Engage stakeholders in decision making



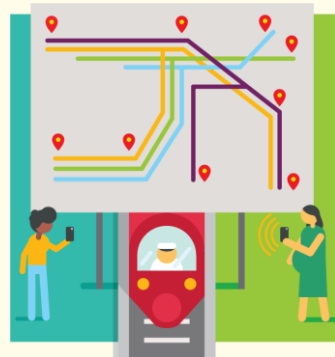
5 Design for equitable access



6 Transition toward zero emissions



7 Seek fair user fees



8 Deliver public benefits via open data



9 Promote integration and seamless connectivity



10 Automated vehicles must be shared

What matters is RISK & PUBLIC BENEFIT



~~Bicycle~~

~~Taxi~~

~~Personal Car~~

~~Truck~~

etc.

Footprint

Weight

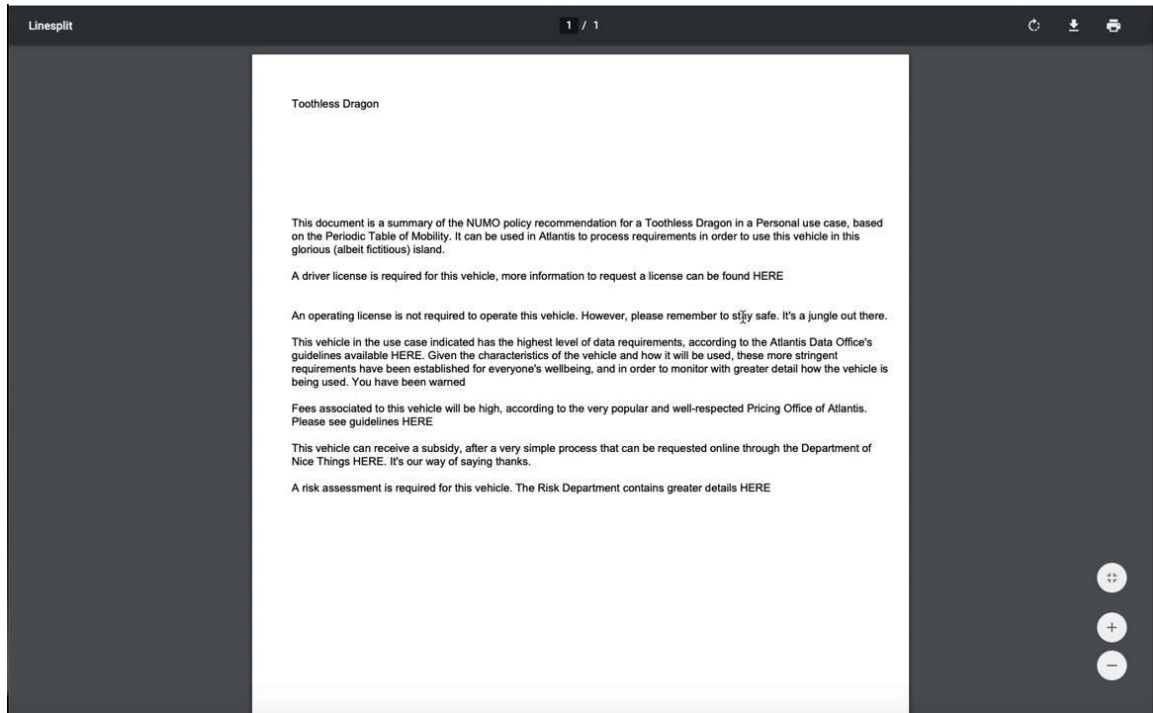
Speed

Emissions

etc.

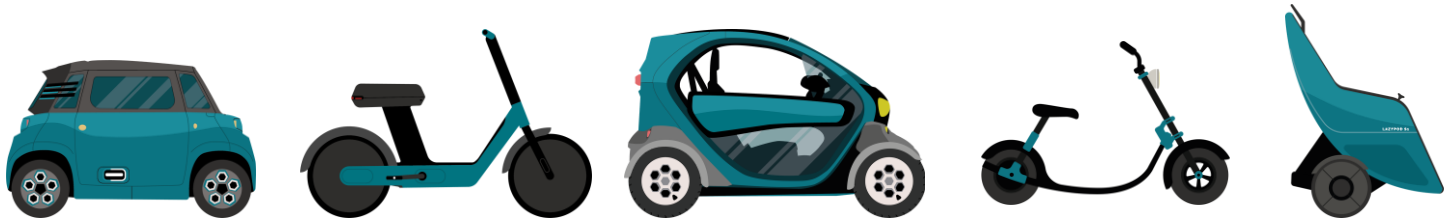


A tool to address this: The Periodic Table of Mobility



What the tool has today

- Data from 40+ typical vehicles
- Algorithms for “NUMO recommendations”
- **Policy recommendations** for licensing, space allocation, fees/fines **based on risk assessment.**



The way forward for this tool

- Improve usability (UI design), reporting, data from cities
- Integrate the tool into risk assessments
- Integrate the tool into curbside management tools

Interested in supporting? Write to carlos@numo.global

Resources